

Parent Information for Home Portal

Once you have received your username and password from the school, you will need internet access to utilize the home portal.

Open a web browser.

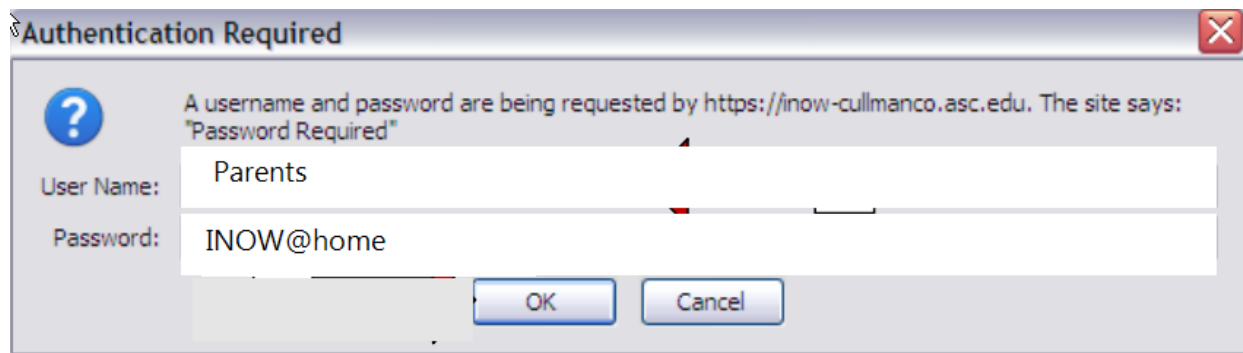
There is a two-step sign-in process. You will first gain CCBOE network access by going to:

<http://inow-cullmanco.asc.edu/informationnow> and log in using

Username: Parents

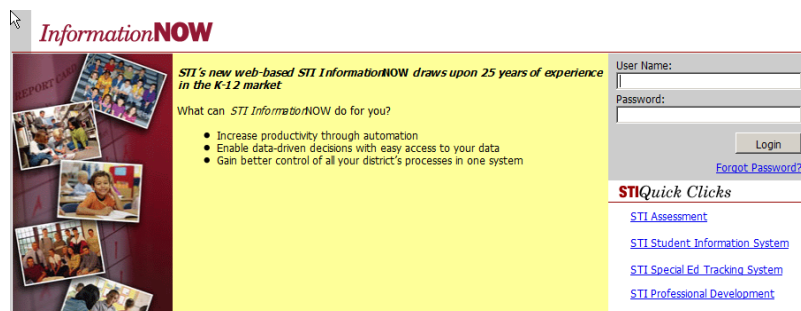
Password: INOW@home

(*The INOW home portal web link can be found on the www.CCBOE.org website under Public| INOW Home Portal.)



Click OK.

The INOW login page will appear. Enter your INOW Home Portal username and password issued by your child's school. (These will be different than the username/password used above.)



You will be asked to change your password upon initial log-in. If you lose or forget your password, contact your school for a Home Portal Password Reset.

Remember to Logout when you are finished working in the program.

****YOU MAY NEED TO TURN OFF YOUR POP-UP BLOCKER (OR ADJUST IT TO ALLOW POP-UP FROM THIS SITE) IN ORDER TO VIEW INOW.**

Please Note: The Go-Green Option is currently unavailable. You may, however, go ahead and select the Go-Green option in the Home Portal (under settings) if you want to participate once the Go-Green option is available.